



Bear are pleased to offer for rent this modern one double bedroom first floor flat benefitting from having a private rear garden, modern kitchen and shower room. The property has been refurbished throughout to a high standard and is Located close to excellent amenities, Chalkwell Park and the seafront. Available Now!

- Refurbished Throughout
- Modern Kitchen
- Double Bedroom
- Sought After Location
- Close To Seafront
- Private Garden
- Modern Shower Room
- Spacious Lounge
- Close to Chalkwell Train Station
- Available Now

## Kings Road

Westcliff on sea

**£1,150**



# Kings Road



## Frontage

### Lounge

13'6" x 11'8"

### Kitchen

9'1" x 6'0"

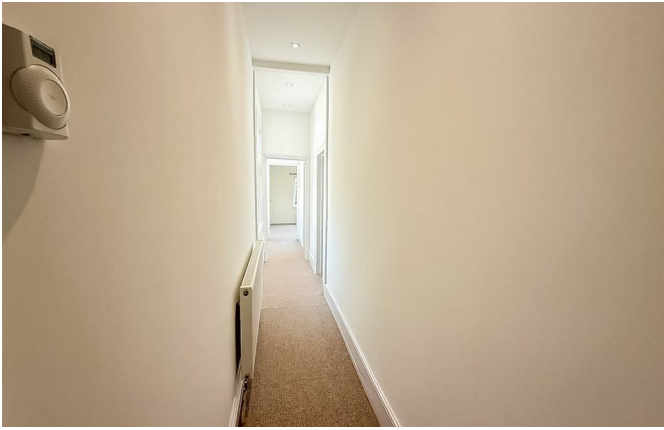
### Bedroom

12'4" x 9'4"

### Bathroom

8'2" x 4'5"

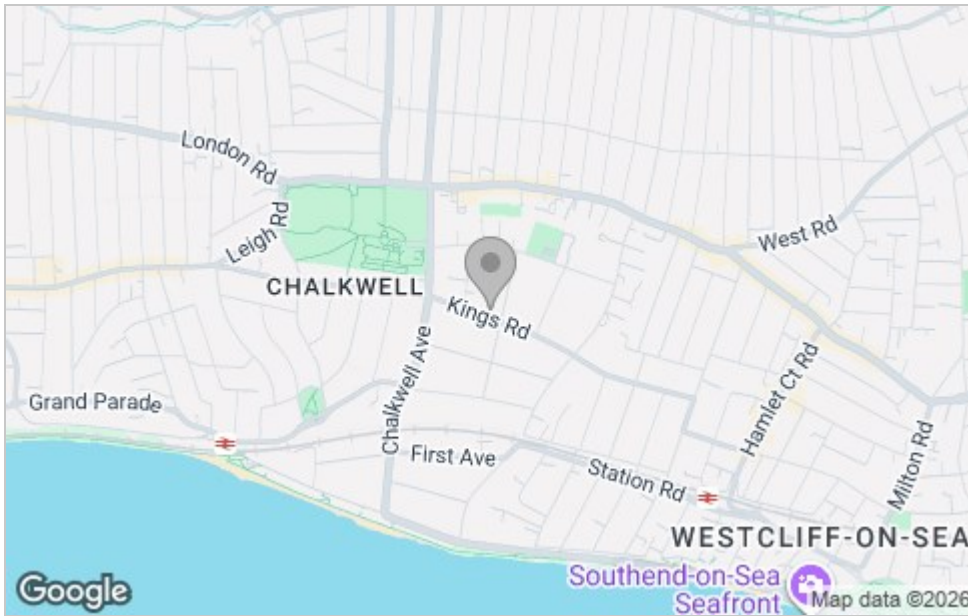
### Rear Garden



# Floor Plan



## Area Map



## Viewing

Please contact our Westcliff-on-Sea Office on 01702 899 780 if you wish to arrange a viewing appointment for this property or require further information.

These particulars, whilst believed to be accurate are set out as a general outline only for guidance and do not constitute any part of an offer or contract. Intending purchasers should not rely on them as statements of representation of fact, but must satisfy themselves by inspection or otherwise as to their accuracy. No person in this firm's employment has the authority to make or give any representation or warranty in respect of the property.

797 London Road, Westcliff-on-Sea, Essex, SS0 9SY

Office: 01702 899 780 [info@bearlettings.co.uk](mailto:info@bearlettings.co.uk)

## Energy Efficiency Graph

